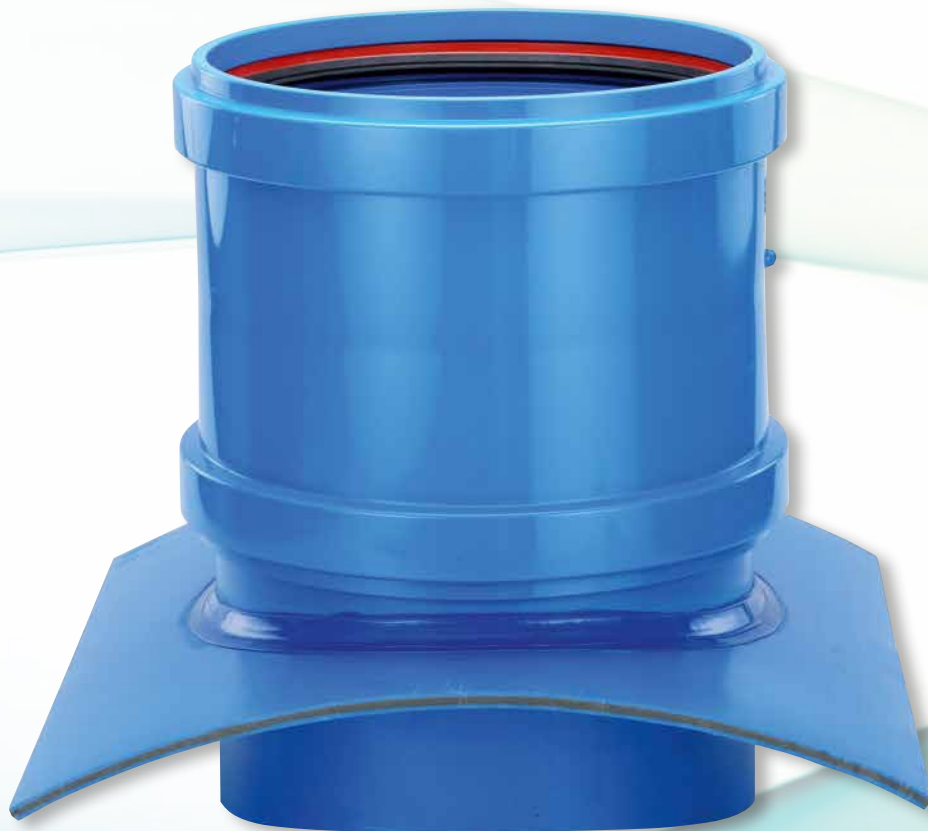


Complete Saddle Set

Lateral Sewer Connection



HS SN 12
110-710 mm



Grey
110-710 mm



Perfect solution for

Complete Saddle Set

Area of use

The Complete Saddle Set is designed for retrofit connections to drainage pipes with dimensions from DN/OD 110 to DN/OD 710 as well as for the use of reconstruction work. Area of use are main pipes (circular or ovoid pipes) in the nominal diameters of DN 200 to DN 2400 especially those made of concrete, clay, GRP, asbestos cement, fibre cement and cast iron.

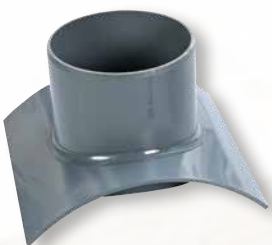
The product

The Complete Saddle Set is designed for the lateral connection to pipes with smooth walls. The Complete Saddle Set is available in grey as well as HS-S (foul water/brown) and HS-R (rainwater/blue). The scope of delivery includes adhesive – that has to be used for the materials PVC, concrete, clay, asbestos-cement, fibre-cement, cast iron, and GRP –, primer, accelerator (hardening agent), spatula, brush, nitrile gloves as well as an installation instructions.

The professional installation of the Complete Saddle Sets on-site is easy, due to the fact that there is no disruption to pipe bedding during installation. When using a custom-made Complete Saddle Set which is also available with a bigger flange, chamber structures become generally superfluous.



*HS-Complete Saddle Set SN 12
blue and brown
DN/OD 110 – 710
for main pipes DN 200 – 2400*



*Complete Saddle Set Grey
DN/OD 110 – 710
for main pipes DN 200 – 2400*

The scope of delivery of the respective nominal diameter can be found in the following table.





Overview of the different Complete Saddle Sets

Connection Complete Saddle Set	HS blue Delivery including:	HS brown Delivery including:	Grey Delivery including:	Supplied number of adhesive sets	Recommended Bore Hole Ø*
DN/OD 110	Double socket	Double socket	Double socket.	1	112 mm
DN/OD 125	Double socket	Double socket	Double socket	1	126 mm
DN/OD 160	VARIO Socket	VARIO Socket	Double socket	1	162 mm
DN/OD 200	VARIO Socket	VARIO Socket	Double socket	1	200 mm
DN/OD 250	Double socket	Double socket	Double socket	2	257 mm
DN/OD 315	Double socket	Double socket	Double socket	3	320 mm
DN/OD 400	VPC415	VPC415	VPC415	4	400 mm
DN/OD 500	VPC520	VPC520	VPC520	5	500 mm
DN/OD 630	VPC660	VPC660	VPC660	6	650 mm
DN/OD 710	VPC730	VPC 30	VPC730	7	730 mm

*information to merchantable drill bits

For professional assembly of the VPC Pipe Coupling, the tangential spanner is required.

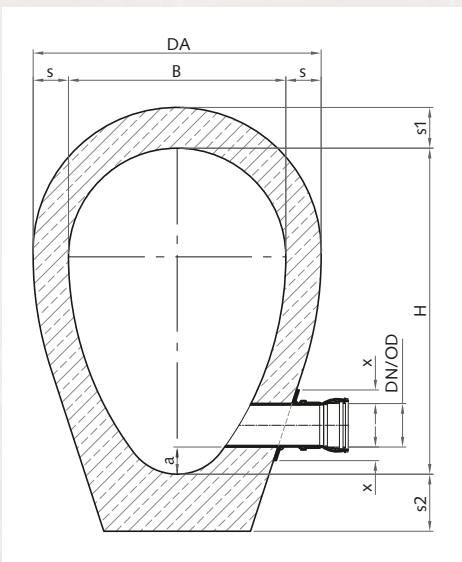
The installation can also be done directly with bends (on site).

retrofit connections

Level-invert connection possible

Next to the standard version, the Complete Saddle Set is also available in the Level-Invert-Version. The component is an ideal solution, when facing new requirements regarding the drainage and lateral drainage. This, for instance, is the case when the connection points of the inlet is below the flange due to a change of the nominal diameter, or in the case of

pipes that do not have a circular external geometry. Thanks to the individual manufactured and the perfectly tailored specific mounting plate that is adapted to the different pipe geometrics it is possible to create drainage and lateral drainage pipelines without any problems.




Further nominal diameters available upon request





A video of the professional installation of the Complete Saddle Set can be found under the keyword "Sewer Connections / Complete Saddle Set" on our website www.funkegruppe.com

Funke Kunststoffe 

Order Form
Complete Saddle Set


Company: _____

Contact person / Telephone: _____


Address: _____

Postcode / City / Country: _____

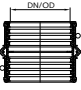
V5= HS-WaRD Socket
DN/OD

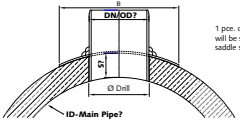


DS= Coupler
DN/OD



VPC= Coupling
DN/OD





1. pic. of coupler/coupling will be supplied loose with saddle set

DN/OD Connection	Please mark				Please fill in Internal diameter Main Pipe mm	Please fill in S Wall thickness Main Pipe mm	B Outer diameter flange „Standard“	Please fill in the sizes B Outer diameter flange „Special size“
	Colour grey	Inlet Socket	HS fibre	HS brown				
DN/OD 110		DS		DS	S =	250 x 250 mm		
DN/OD 125		DS		DS	S =	300 x 300 mm		
DN/OD 160		DS		VS	S =	320 x 320 mm		
DN/OD 200		DS		V5	S =	360 x 360 mm		
DN/OD 250		DS		DS	S =	400 x 400 mm		
DN/OD 315		DS		DS	S =	500 x 500 mm		
DN/OD 400		VPC 415		VPC 415	S =	600 x 600 mm		
DN/OD 500		VPC 520		VPC 520	S =	700 x 700 mm		
DN/OD 630*		VPC 660		VPC 660	S =	900 x 900 mm		
DN/OD 710*		VPC 730		VPC 730	S =	1000 x 1000 mm		

* We recommend installation by manufacturer (ask for question). Special production – Return not possible!

DN/OD Connection	Recommendation: Drill Hole in mm	Quantity of included sets (Glue, Resin, Primer)
DN/OD 110	112	1
DN/OD 125	126	1
DN/OD 160	162	1
DN/OD 200	200	1
DN/OD 250	257	2
DN/OD 315	320	3
DN/OD 400*	400	4
DN/OD 500*	500	5
DN/OD 630*	650	6
DN/OD 710*	730	7

*deburn outer edges slightly Issued: 10-2019

Accessories:

Saddle clamp for connection in the diameters DN/OD 110 - 250	
Saddle clamp for connection in the diameters DN/OD 315 - 500	
Tangential spanner for VPC DN/OD 400 - 710	

NOTE:
depending on the drill size / connection the static of the main pipe has to be checked / considered.

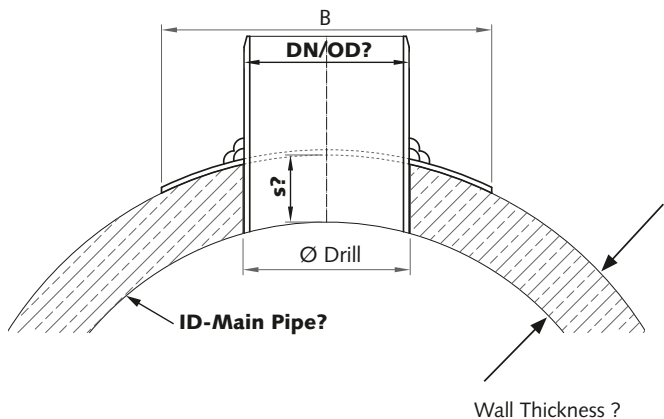
Fax: +49 2388 3071-7550



Installation instructions

First of all create the core drill hole centrally to the pipe axis and insert the saddle set for testing into the drill hole and mark the base plate dimension on the main pipe (e.g. concrete pipe). In the next step, evenly coat the pipe adhesion surfaces as well as the bottom of the saddle set with the primer using the brush supplied. Special attention should be given to the inner surface of the bore hole as well as to the surface upon which the Complete Saddle Set is going to be positioned. When dealing with severely absorbent concrete sub-surfaces repeat the process. Briefly allow the primer to flash off. At the same time, thoroughly mix accelerator with the glue according to the manufacturer's instructions. Generously apply the finished glue onto the pre-primed contact surfaces using the spatula provided. Now, apply the Complete Saddle Set – depending on the nominal diameter – with the help of the saddle clamp or tightening straps and press on firmly. In the next operation attach and loosely screw on the clamp and distribute the glue in the outer area using the spatula. Additionally, also coat any surplus glue inside the main pipe. The clamp can be removed after approx. 1–5 hours of hardening time. The corners can also be fixed with wall plugs when dealing with larger nominal diameters and wall thicknesses accordingly. Attention: Do not drill through the main pipe when drilling for the wall plugs.

The questionnaire form for the "Complete Saddle Set" can be requested by telephone or downloaded from our website www.funkegruppe.com under the section "Service".



Funke Kunststoffe GmbH
Germany
Tel.: +49 2388 3071-0
info@funkegruppe.de
www.funkegruppe.com

